

OLIVIA

L Y N B R O O K

# OLIVIA

LYNBROOK

## STAGE 1



**RESIDENCE 18**  
Size - 215.1 m<sup>2</sup>  
Backyard - 61 m<sup>2</sup>

**RESIDENCE 26**  
Size - 168.5 m<sup>2</sup>  
Backyard - 71 m<sup>2</sup>

**RESIDENCE 19**  
Size - 130.5 m<sup>2</sup>  
Backyard - 56 m<sup>2</sup>

**RESIDENCE 27**  
Size - 130.5 m<sup>2</sup>  
Backyard - 58 m<sup>2</sup>

**RESIDENCE 20**  
Size - 135 m<sup>2</sup>  
Backyard - 59 m<sup>2</sup>

**RESIDENCE 28**  
Size - 179.4 m<sup>2</sup>  
Backyard - 57 m<sup>2</sup>

**RESIDENCE 21**  
Size - 176.4 m<sup>2</sup>  
Backyard - 71 m<sup>2</sup>

**RESIDENCE 29**  
Size - 179.4 m<sup>2</sup>  
Backyard - 55 m<sup>2</sup>

**RESIDENCE 22**  
Size - 179.4 m<sup>2</sup>  
Backyard - 58 m<sup>2</sup>

**RESIDENCE 30**  
Size - 164.5 m<sup>2</sup>  
Backyard - 52 m<sup>2</sup>

**RESIDENCE 23**  
Size - 176.4 m<sup>2</sup>  
Backyard - 69 m<sup>2</sup>

**RESIDENCE 31**  
Size - 179.4 m<sup>2</sup>  
Backyard - 71 m<sup>2</sup>

**RESIDENCE 24**  
Size - 164.5 m<sup>2</sup>  
Backyard - 54 m<sup>2</sup>

**RESIDENCE 32**  
Size - 207.6 m<sup>2</sup>  
Backyard - 51 m<sup>2</sup>

**RESIDENCE 25**  
Size - 207.6 m<sup>2</sup>  
Backyard - 47 m<sup>2</sup>



.....  
This document has been produced solely for the information for potential purchaser to assist them in deciding whether they are sufficiently interested in the properties to proceed further. The information contained in this material has been produced in good faith with due care. We do not warrant the accuracy of any information contained herein and do not accept liability for negligence, any error or discrepancy or otherwise in the information. This document may be subject to change without notice.

# OLIVIA

LYNBROOK

## STAGE 2



**RESIDENCE 01**  
Size - 207.6 m<sup>2</sup>  
Backyard - 51 m<sup>2</sup>

**RESIDENCE 10**  
Size - 207.6 m<sup>2</sup>  
Backyard - 47 m<sup>2</sup>

**RESIDENCE 02**  
Size - 179.4 m<sup>2</sup>  
Backyard - 56 m<sup>2</sup>

**RESIDENCE 11**  
Size - 164.5 m<sup>2</sup>  
Backyard - 54 m<sup>2</sup>

**RESIDENCE 03**  
Size - 176.4 m<sup>2</sup>  
Backyard - 75 m<sup>2</sup>

**RESIDENCE 12**  
Size - 184.5 m<sup>2</sup>  
Backyard - 70 m<sup>2</sup>

**RESIDENCE 04**  
Size - 164.5 m<sup>2</sup>  
Backyard - 56 m<sup>2</sup>

**RESIDENCE 13**  
Size - 179.4 m<sup>2</sup>  
Backyard - 73 m<sup>2</sup>

**RESIDENCE 05**  
Size - 184.5 m<sup>2</sup>  
Backyard - 54 m<sup>2</sup>

**RESIDENCE 14**  
Size - 176.4 m<sup>2</sup>  
Backyard - 62 m<sup>2</sup>

**RESIDENCE 06**  
Size - 179.4 m<sup>2</sup>  
Backyard - 57 m<sup>2</sup>

**RESIDENCE 15**  
Size - 168.4 m<sup>2</sup>  
Backyard - 53 m<sup>2</sup>

**RESIDENCE 07**  
Size - 164.5 m<sup>2</sup>  
Backyard - 54 m<sup>2</sup>

**RESIDENCE 16**  
Size - 164.5 m<sup>2</sup>  
Backyard - 53 m<sup>2</sup>

**RESIDENCE 08**  
Size - 179.4 m<sup>2</sup>  
Backyard - 51 m<sup>2</sup>

**RESIDENCE 17**  
Size - 215.1 m<sup>2</sup>  
Backyard - 57 m<sup>2</sup>

**RESIDENCE 09**  
Size - 179.4 m<sup>2</sup>  
Backyard - 85 m<sup>2</sup>



OLIVE ROAD

.....  
This document has been produced solely for the information for potential purchaser, to assist them in deciding whether they are sufficiently interested in the properties to proceed further. The information contained in this material has been produced in good faith with due care. We do not warrant the accuracy of any information contained herein and do not accept liability for negligence, any error or discrepancy or otherwise in the information. This document may be subject to change without notice.

# OLIVIA

LYNBROOK

## Residence 01



- 4



- 3.5



- 2

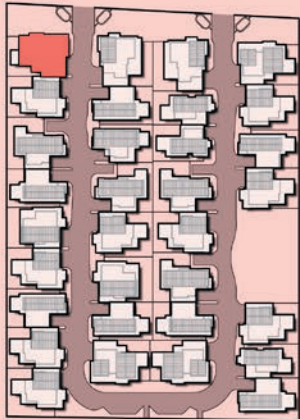
Ground floor - 89.9 m<sup>2</sup>

First floor - 76.2 m<sup>2</sup>

Garage - 38 m<sup>2</sup>

Total Area - 207.6 m<sup>2</sup>

Backyard - 51 m<sup>2</sup>



This document has been produced solely for the information for potential purchaser to assist them in deciding whether they are sufficiently interested in the properties to proceed further. The information contained in this material has been produced in good faith with due care. We do not warrant the accuracy of any information contained herein and do not accept liability for negligence, any error or discrepancy or otherwise in the information. This document may be subject to change without notice.

### FIRST FLOOR PLAN



### GROUND FLOOR PLAN



# OLIVIA

LYNBROOK

## Residence 02



- 3



- 2.5



- 2

Ground floor - 67.7 m<sup>2</sup>

First floor - 69.5 m<sup>2</sup>

Garage - 39.2 m<sup>2</sup>

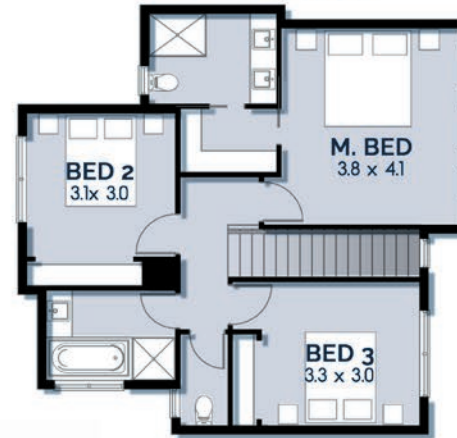
Total Area - 179.4 m<sup>2</sup>

Backyard - 56 m<sup>2</sup>



This document has been produced solely for the information for potential purchaser to assist them in deciding whether they are sufficiently interested in the properties to proceed further. The information contained in this material has been produced in good faith with due care. We do not warrant the accuracy of any information contained herein and do not accept liability for negligence, any error or discrepancy or otherwise in the information. This document may be subject to change without notice.

### FIRST FLOOR PLAN



### GROUND FLOOR PLAN



# OLIVIA

LYNBROOK

## Residence 03



- 3



- 2.5



- 1

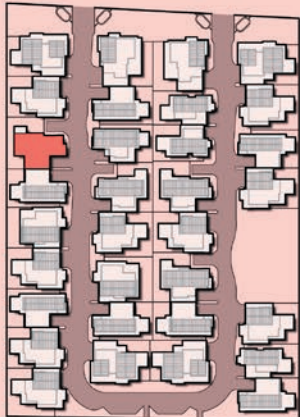
Ground floor - 75.0 m<sup>2</sup>

First floor - 72.6 m<sup>2</sup>

Garage - 25.5 m<sup>2</sup>

Total Area - 176.4 m<sup>2</sup>

Backyard - 75 m<sup>2</sup>



This document has been produced solely for the information for potential purchaser, to assist them in deciding whether they are sufficiently interested in the properties to proceed further. The information contained in this material has been produced in good faith with due care. We do not warrant the accuracy of any information contained herein and do not accept liability for negligence, any error or discrepancy or otherwise in the information. This document may be subject to change without notice.

### FIRST FLOOR PLAN



### GROUND FLOOR PLAN



# OLIVIA

LYNBROOK

## Residence 04



- 3



- 2.5



- 1

Ground floor - 68.2 m<sup>2</sup>

First floor - 69 m<sup>2</sup>

Garage - 25.6 m<sup>2</sup>

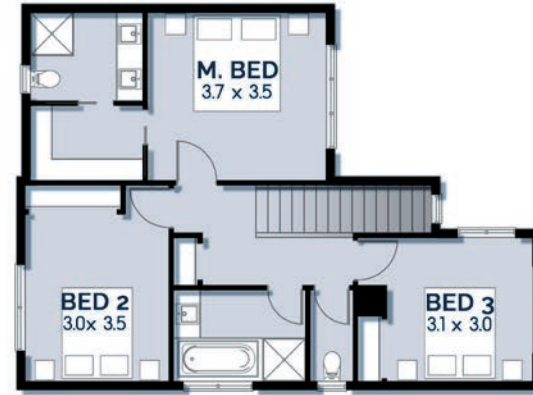
Total Area - 164.5 m<sup>2</sup>

Backyard - 56 m<sup>2</sup>



This document has been produced solely for the information for potential purchaser to assist them in deciding whether they are sufficiently interested in the properties to proceed further. The information contained in this material has been produced in good faith with due care. We do not warrant the accuracy of any information contained herein and do not accept liability for negligence, any error or discrepancy or otherwise in the information. This document may be subject to change without notice.

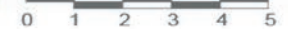
### FIRST FLOOR PLAN



### GARAGE 6.0 x 3.5



### GROUND FLOOR PLAN



# OLIVIA

LYNBROOK

## Residence 05



- 3



- 2.5



- 2

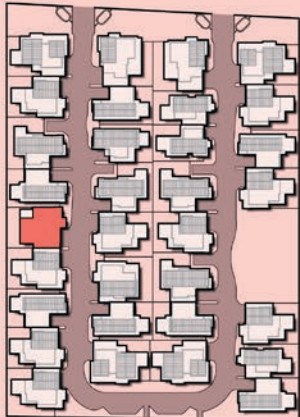
Ground floor - 71 m<sup>2</sup>

First floor - 72 m<sup>2</sup>

Garage - 38.8 m<sup>2</sup>

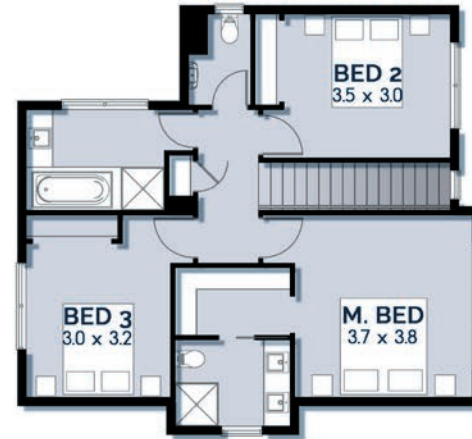
Total Area - 184.5 m<sup>2</sup>

Backyard - 54 m<sup>2</sup>

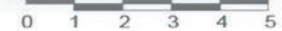
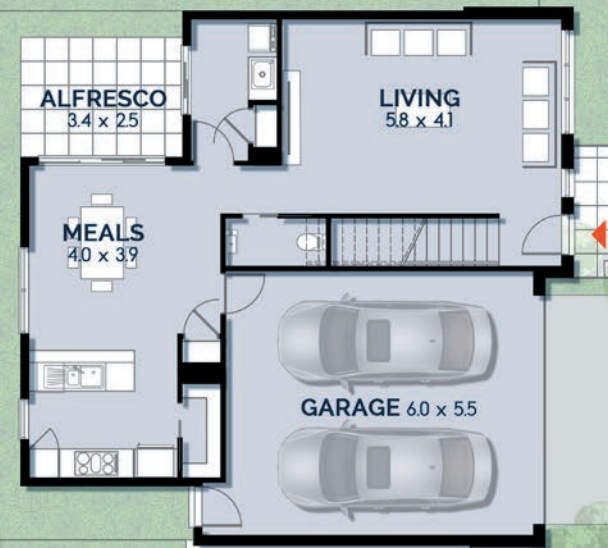


This document has been produced solely for the information for potential purchaser, to assist them in deciding whether they are sufficiently interested in the properties to proceed further. The information contained in this material has been produced in good faith with due care. We do not warrant the accuracy of any information contained herein and do not accept liability for negligence, any error or discrepancy or otherwise in the information. This document may be subject to change without notice.

### FIRST FLOOR PLAN



### GROUND FLOOR PLAN





# OLIVIA

LYNBROOK

## Residence 06



- 3



- 2.5



- 2

Ground floor - 67.6 m<sup>2</sup>

First floor - 69.5 m<sup>2</sup>

Garage - 39.2 m<sup>2</sup>

Total Area - 179.4 m<sup>2</sup>

Backyard - 57 m<sup>2</sup>



This document has been produced solely for the information for potential purchaser, to assist them in deciding whether they are sufficiently interested in the properties to proceed further. The information contained in this material has been produced in good faith with due care. We do not warrant the accuracy of any information contained herein and do not accept liability for negligence, any error or discrepancy or otherwise in the information. This document may be subject to change without notice.

### FIRST FLOOR PLAN



### GROUND FLOOR PLAN



# OLIVIA

LYNBROOK

## Residence 07



- 3



- 2.5



- 1

Ground floor - 68.2 m<sup>2</sup>

First floor - 69 m<sup>2</sup>

Garage - 25.6 m<sup>2</sup>

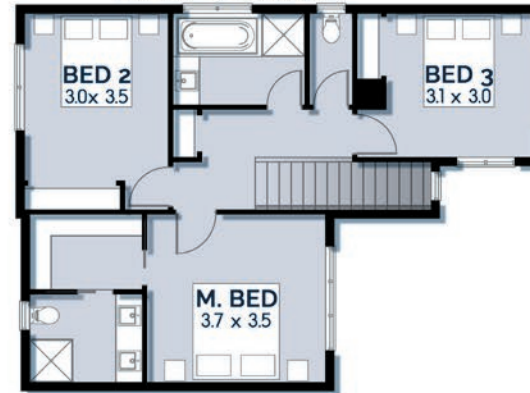
Total Area - 164.5 m<sup>2</sup>

Backyard - 54 m<sup>2</sup>



This document has been produced solely for the information for potential purchaser to assist them in deciding whether they are sufficiently interested in the properties to proceed further. The information contained in this material has been produced in good faith with due care. We do not warrant the accuracy of any information contained herein and do not accept liability for negligence, any error or discrepancy or otherwise in the information. This document may be subject to change without notice.

### FIRST FLOOR PLAN



### GROUND FLOOR PLAN

ALFRESCO  
2.5 x 4.0

MEALS  
3.3 x 5.2

LIVING  
4.7 x 4.1

GARAGE 6.0 x 3.5



# OLIVIA

LYNBROOK

## Residence 08



- 3



- 2.5



- 2

Ground floor - 67.6 m<sup>2</sup>

First floor - 69.5 m<sup>2</sup>

Garage - 39.2 m<sup>2</sup>

Total Area - 179.4 m<sup>2</sup>

Backyard - 51 m<sup>2</sup>

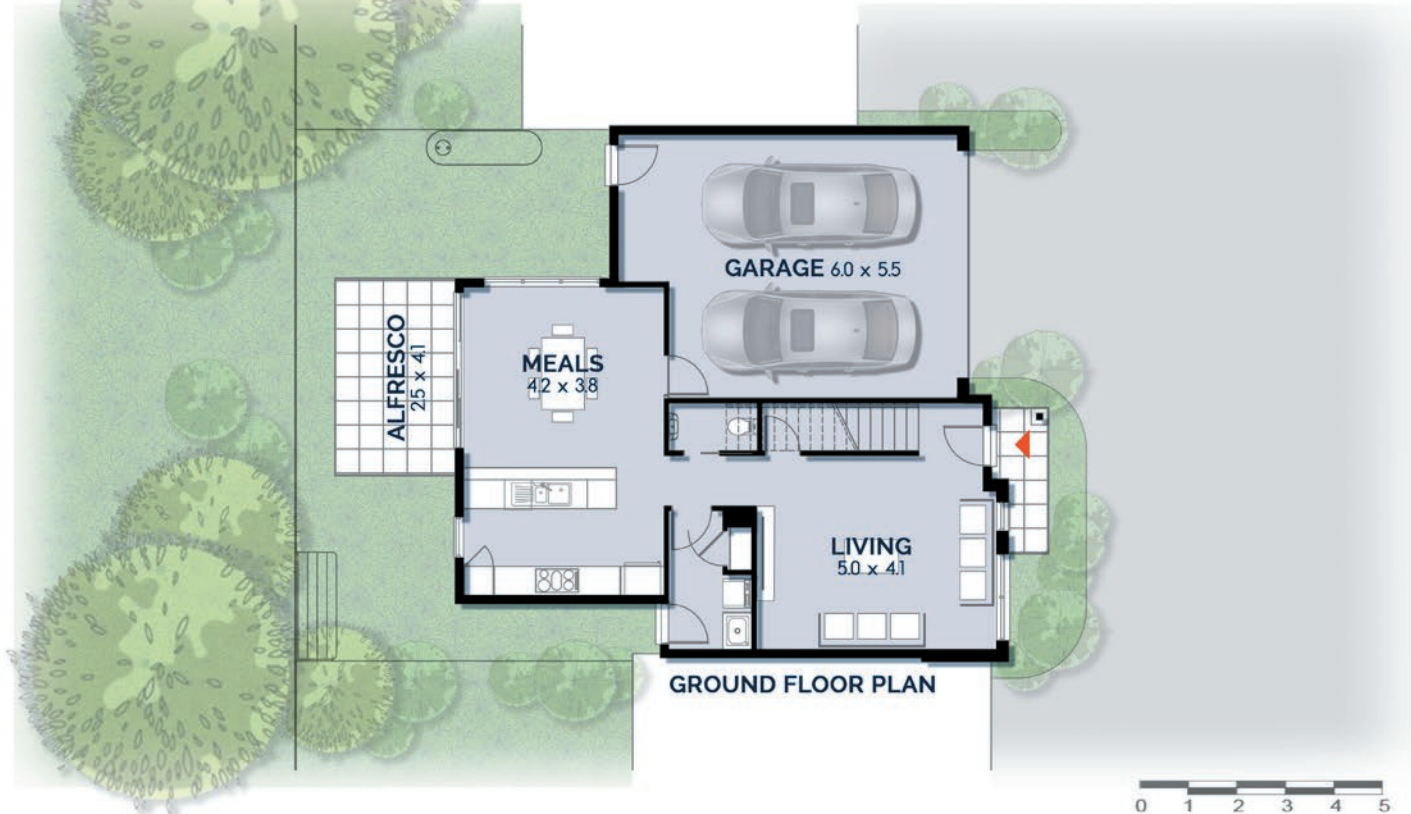


This document has been produced solely for the information for potential purchaser to assist them in deciding whether they are sufficiently interested in the properties to proceed further. The information contained in this material has been produced in good faith with due care. We do not warrant the accuracy of any information contained herein and do not accept liability for negligence, any error or discrepancy or otherwise in the information. This document may be subject to change without notice.

### FIRST FLOOR PLAN



### GROUND FLOOR PLAN



# OLIVIA

LYNBROOK

## Residence 09



- 3



- 2.5



- 2

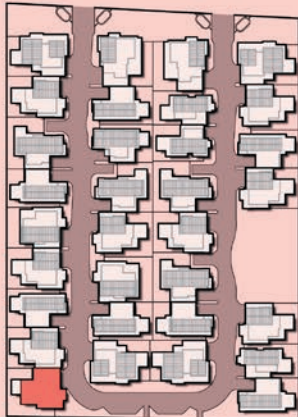
Ground floor - 67.7 m<sup>2</sup>

First floor - 69.5 m<sup>2</sup>

Garage - 39.2 m<sup>2</sup>

Total Area - 179.4 m<sup>2</sup>

Backyard - 85 m<sup>2</sup>

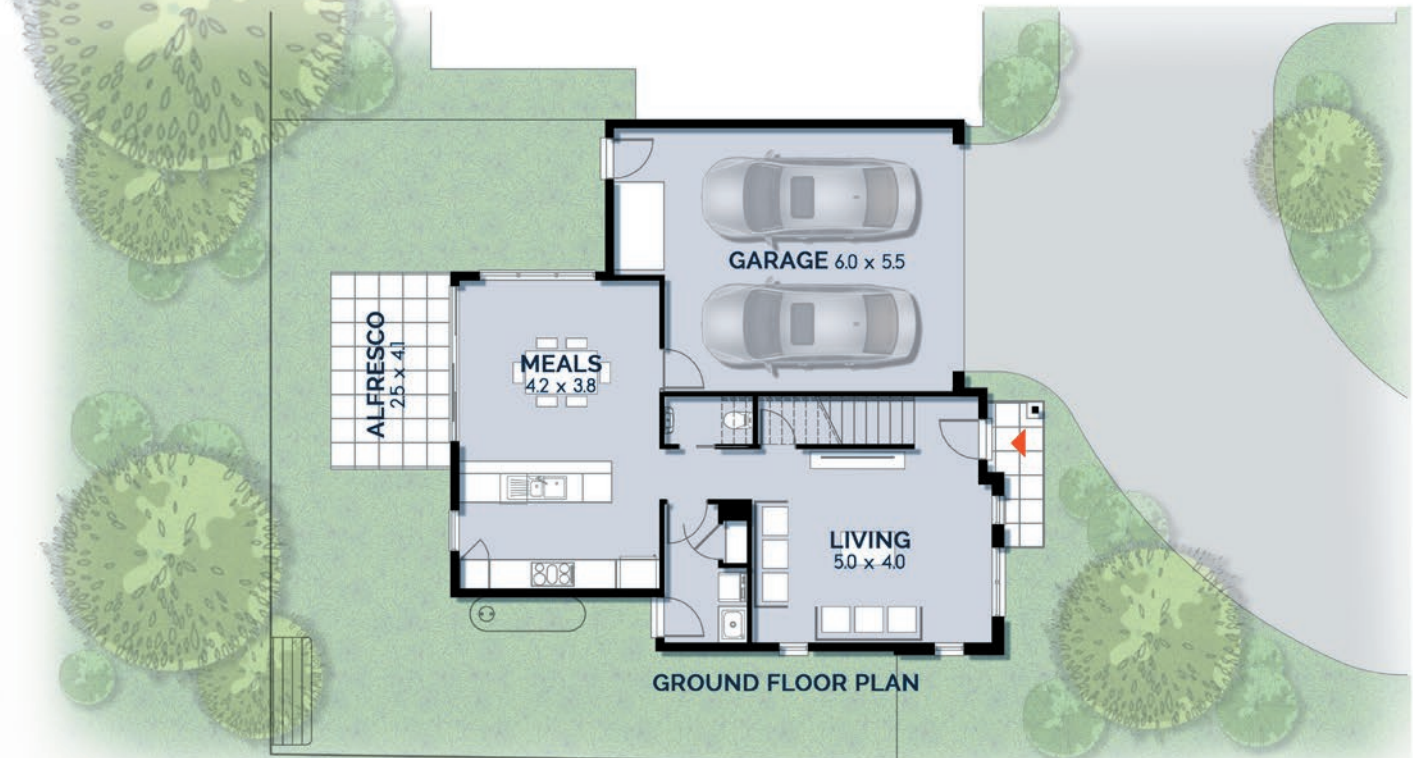


This document has been produced solely for the information for potential purchaser to assist them in deciding whether they are sufficiently interested in the properties to proceed further. The information contained in this material has been produced in good faith with due care. We do not warrant the accuracy of any information contained herein and do not accept liability for negligence, any error or discrepancy or otherwise in the information. This document may be subject to change without notice.

### FIRST FLOOR PLAN



### GROUND FLOOR PLAN



0 1 2 3 4 5

# OLIVIA

LYNBROOK

## Residence 10

 - 4

 - 3.5

 - 2

Ground floor - 89.9 m<sup>2</sup>

First floor - 76.2 m<sup>2</sup>

Garage - 38 m<sup>2</sup>

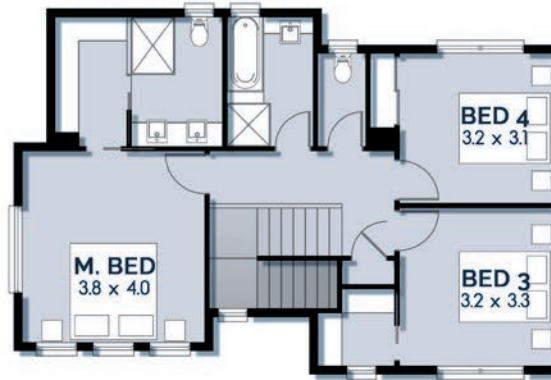
Total Area - 207.6 m<sup>2</sup>

Backyard - 47 m<sup>2</sup>

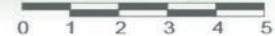
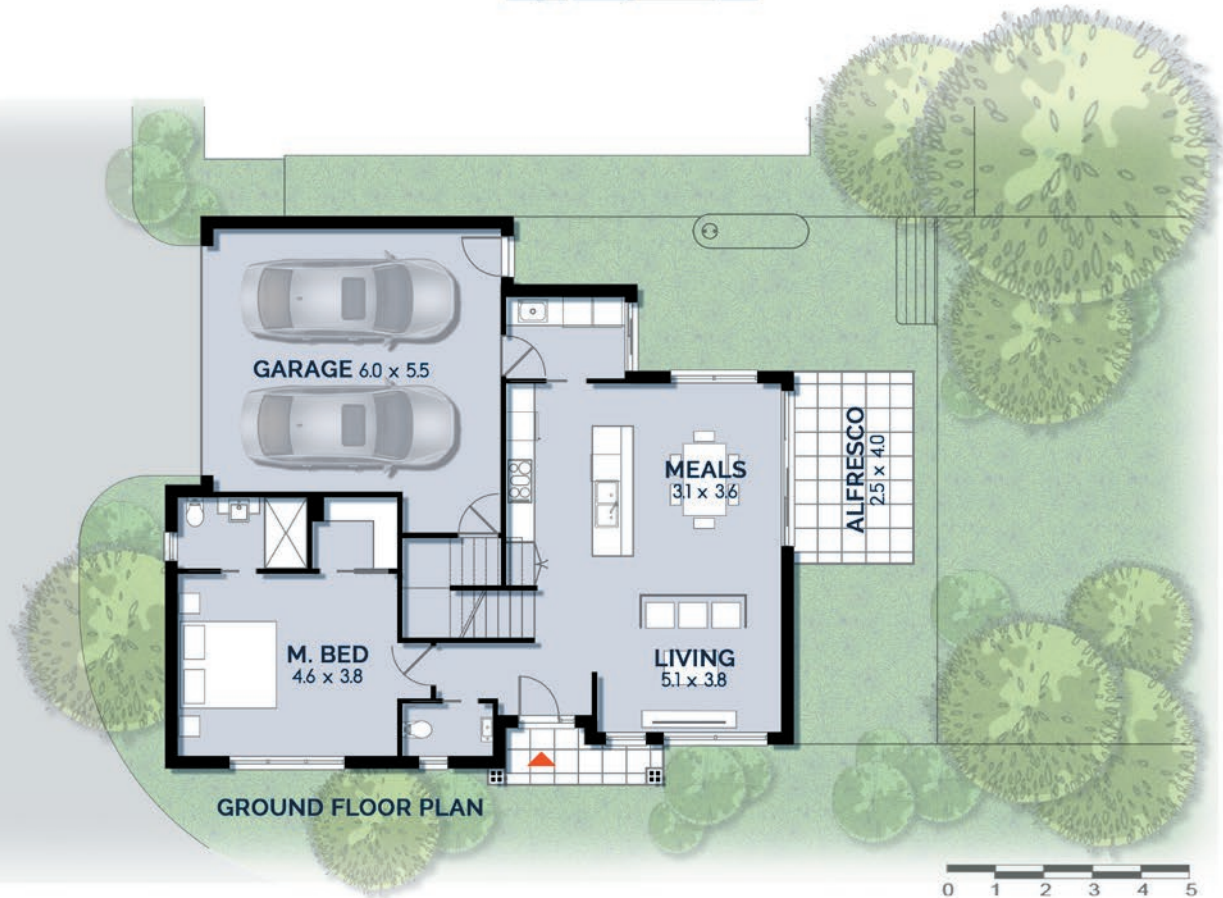


This document has been produced solely for the information for potential purchaser, to assist them in deciding whether they are sufficiently interested in the properties to proceed further. The information contained in this material has been produced in good faith with due care. We do not warrant the accuracy of any information contained herein and do not accept liability for negligence, any error or discrepancy or otherwise in the information. This document may be subject to change without notice.

### FIRST FLOOR PLAN



### GROUND FLOOR PLAN



# OLIVIA

LYNBROOK

## Residence 11

 - 3

 - 2.5

 - 1

Ground floor - 68.2 m<sup>2</sup>

First floor - 69 m<sup>2</sup>

Garage - 25.6 m<sup>2</sup>

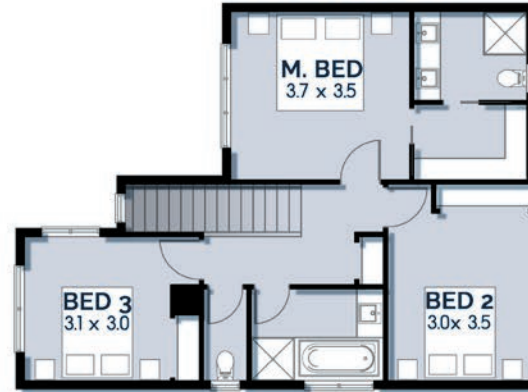
Total Area - 164.5 m<sup>2</sup>

Backyard - 54 m<sup>2</sup>

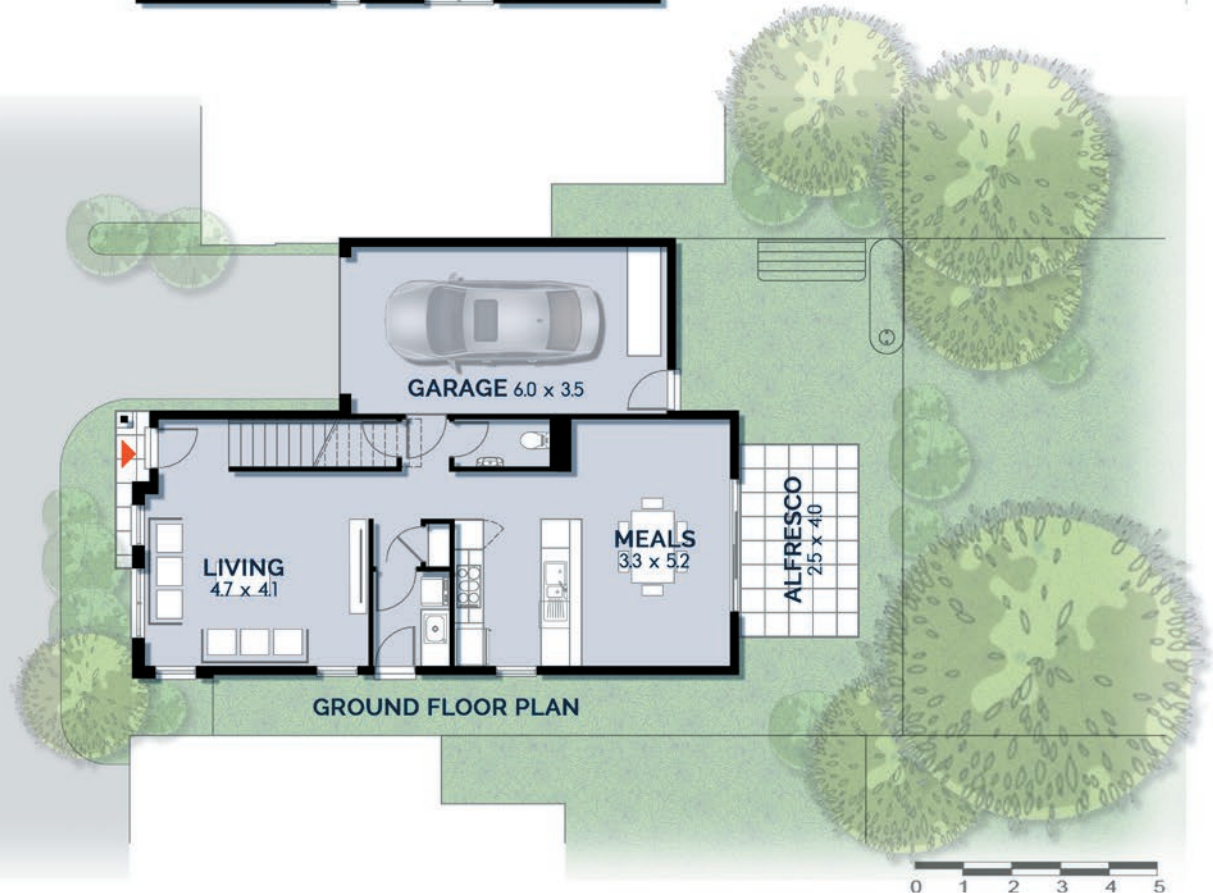


This document has been produced solely for the information for potential purchaser, to assist them in deciding whether they are sufficiently interested in the properties to proceed further. The information contained in this material has been produced in good faith with due care. We do not warrant the accuracy of any information contained herein and do not accept liability for negligence, any error or discrepancy or otherwise in the information. This document may be subject to change without notice.

### FIRST FLOOR PLAN



### GROUND FLOOR PLAN



0 1 2 3 4 5

# OLIVIA

LYNBROOK

## Residence 12



- 3



- 2.5



- 2

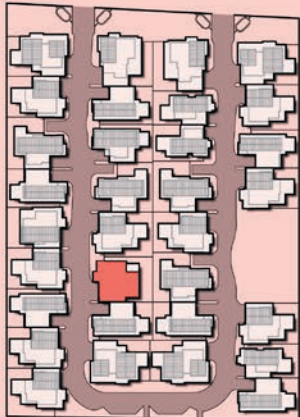
Ground floor - 71 m<sup>2</sup>

First floor - 72 m<sup>2</sup>

Garage - 38.8 m<sup>2</sup>

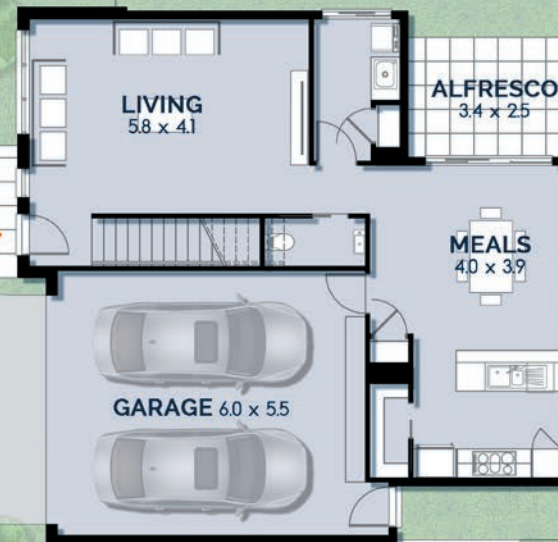
Total Area - 184.5 m<sup>2</sup>

Backyard - 70 m<sup>2</sup>



This document has been produced solely for the information for potential purchaser, to assist them in deciding whether they are sufficiently interested in the properties to proceed further. The information contained in this material has been produced in good faith with due care. We do not warrant the accuracy of any information contained herein and do not accept liability for negligence, any error or discrepancy or otherwise in the information. This document may be subject to change without notice.

### FIRST FLOOR PLAN



### GROUND FLOOR PLAN



# OLIVIA

LYNBROOK

## Residence 13



- 3



- 2.5



- 2

Ground floor - 67.7 m<sup>2</sup>

First floor - 69.5 m<sup>2</sup>

Garage - 39.2 m<sup>2</sup>

Total Area - 179.4 m<sup>2</sup>

Backyard - 73 m<sup>2</sup>

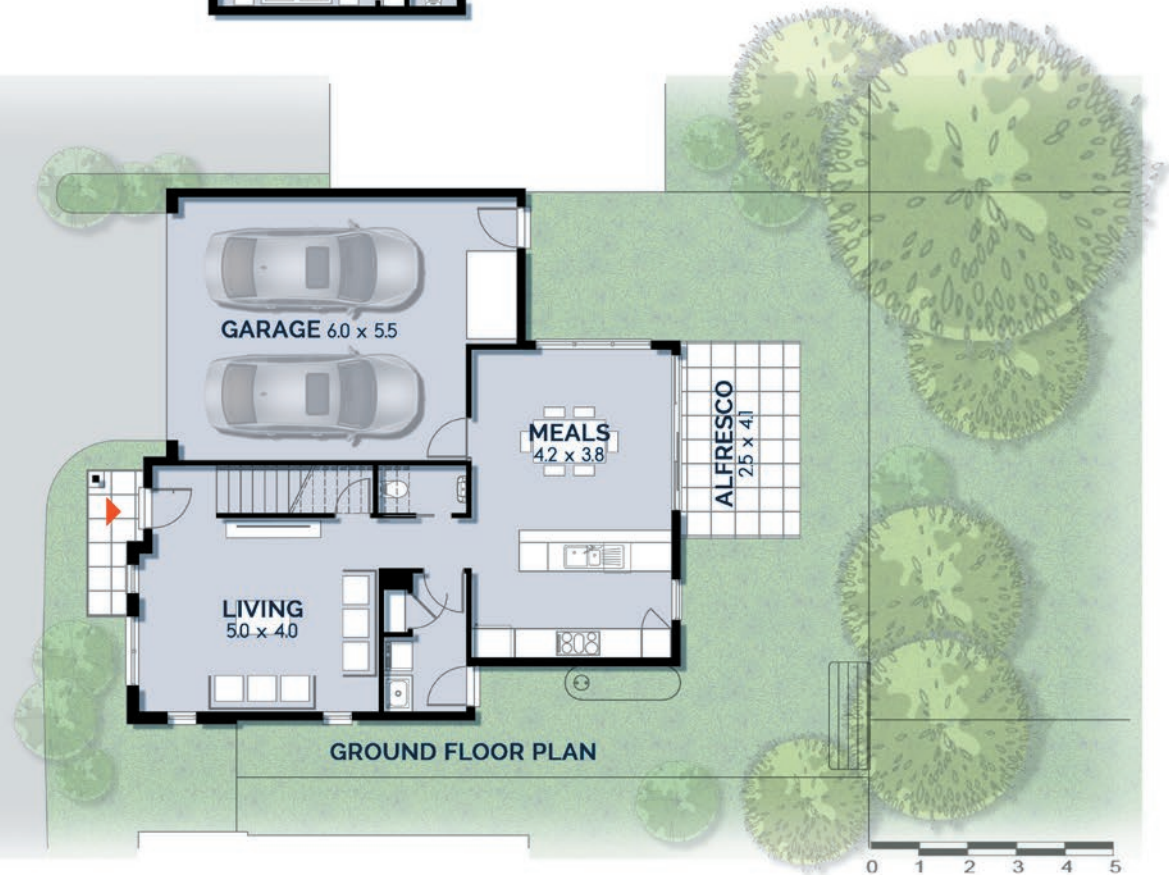


This document has been produced solely for the information for potential purchaser, to assist them in deciding whether they are sufficiently interested in the properties to proceed further. The information contained in this material has been produced in good faith with due care. We do not warrant the accuracy of any information contained herein and do not accept liability for negligence, any error or discrepancy or otherwise in the information. This document may be subject to change without notice.

### FIRST FLOOR PLAN



### GROUND FLOOR PLAN





# OLIVIA

LYNBROOK

## Residence 14



- 2



- 2.5



- 1

Ground floor - 75.0 m<sup>2</sup>

First floor - 72.6 m<sup>2</sup>

Garage - 25.5 m<sup>2</sup>

Total Area - 176.4 m<sup>2</sup>

Backyard - 62 m<sup>2</sup>



This document has been produced solely for the information for potential purchaser, to assist them in deciding whether they are sufficiently interested in the properties to proceed further. The information contained in this material has been produced in good faith with due care. We do not warrant the accuracy of any information contained herein and do not accept liability for negligence, any error or discrepancy or otherwise in the information. This document may be subject to change without notice.

### FIRST FLOOR PLAN



### GROUND FLOOR PLAN



# OLIVIA

LYNBROOK

## Residence 15



- 3



- 2.5



- 1

Ground floor - 68.2 m<sup>2</sup>

First floor - 72.6 m<sup>2</sup>

Garage - 26 m<sup>2</sup>

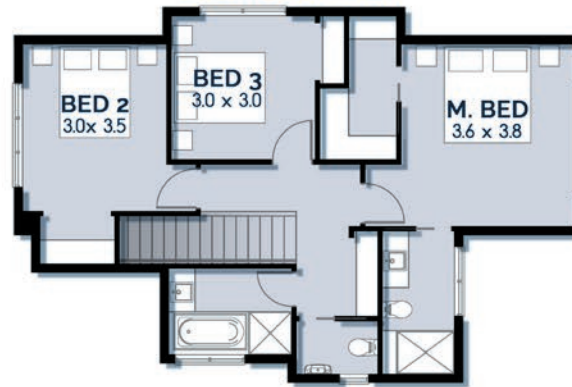
Total Area - 168.5 m<sup>2</sup>

Backyard - 53 m<sup>2</sup>

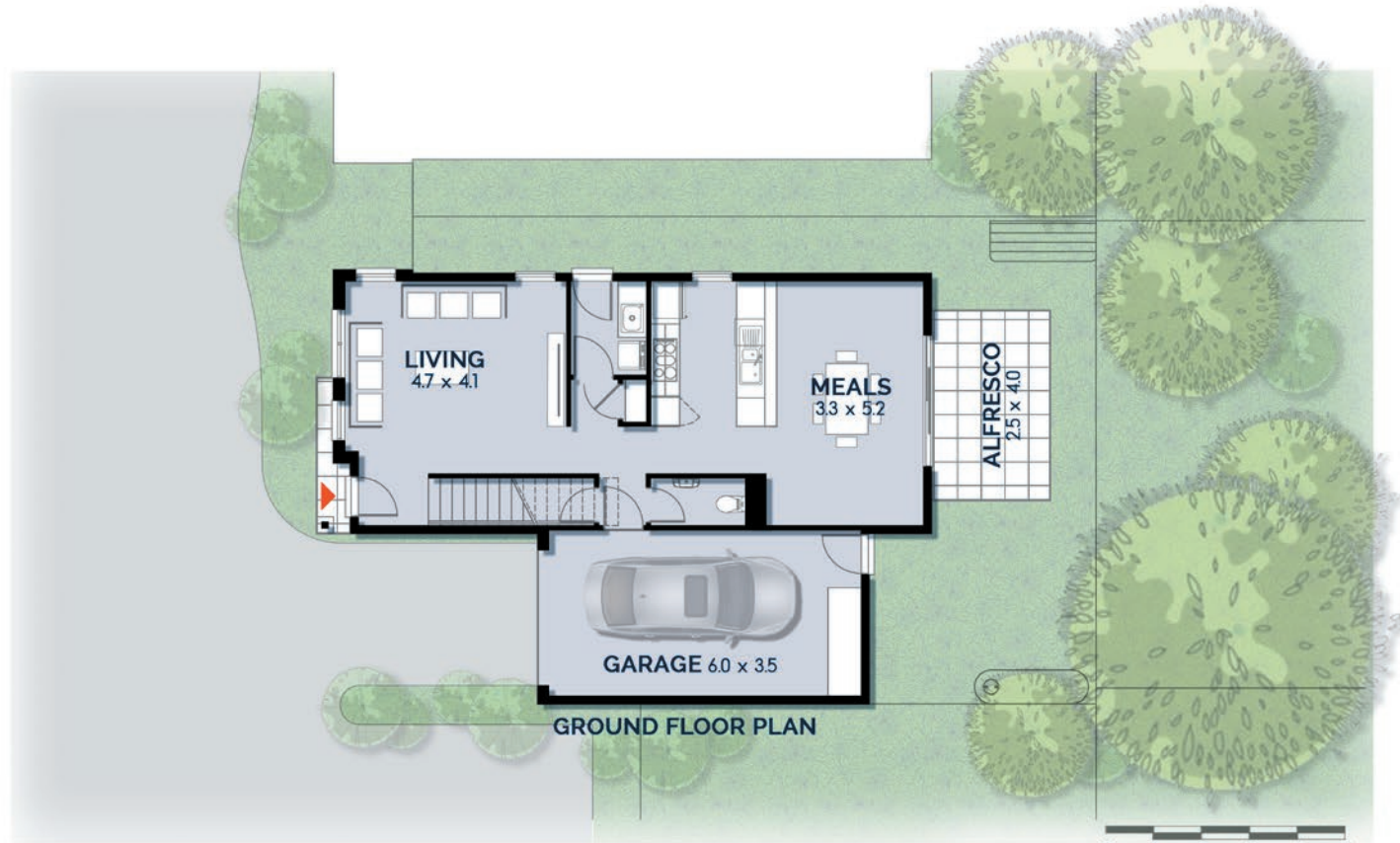


This document has been produced solely for the information for potential purchaser, to assist them in deciding whether they are sufficiently interested in the properties to proceed further. The information contained in this material has been produced in good faith with due care. We do not warrant the accuracy of any information contained herein and do not accept liability for negligence, any error or discrepancy or otherwise in the information. This document may be subject to change without notice.

### FIRST FLOOR PLAN



### GROUND FLOOR PLAN



# OLIVIA

LYNBROOK

## Residence 16



- 3



- 2.5



- 1

Ground floor - 68.2 m<sup>2</sup>

First floor - 69 m<sup>2</sup>

Garage - 25.6 m<sup>2</sup>

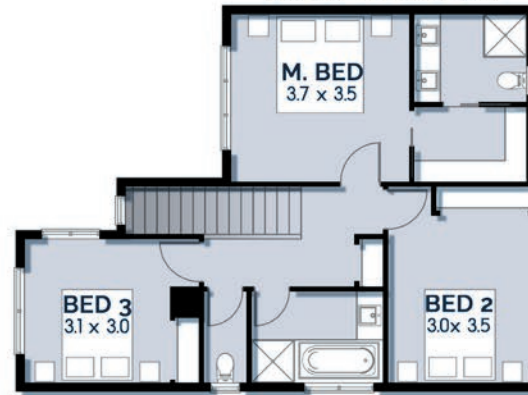
Total Area - 164.5 m<sup>2</sup>

Backyard - 53 m<sup>2</sup>

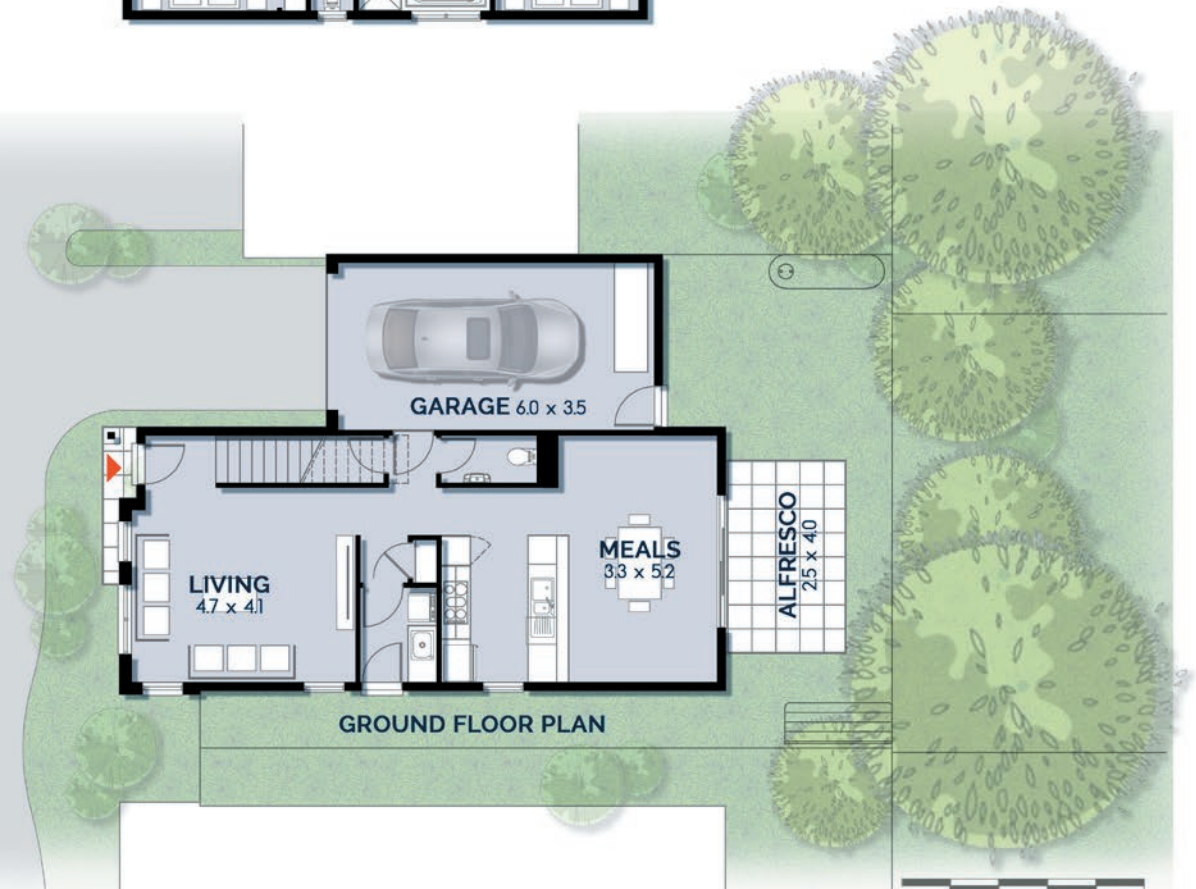


This document has been produced solely for the information for potential purchaser, to assist them in deciding whether they are sufficiently interested in the properties to proceed further. The information contained in this material has been produced in good faith with due care. We do not warrant the accuracy of any information contained herein and do not accept liability for negligence, any error or discrepancy or otherwise in the information. This document may be subject to change without notice.

### FIRST FLOOR PLAN



### GROUND FLOOR PLAN



# OLIVIA

LYNBROOK

## Residence 17

 - 4

 - 2.5

 - 2

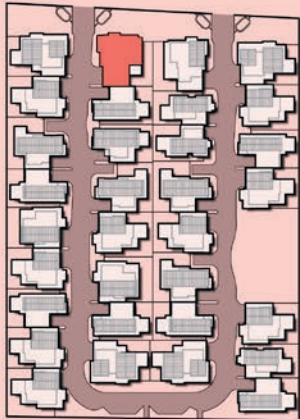
Ground floor - 88.8 m<sup>2</sup>

First floor - 81.7 m<sup>2</sup>

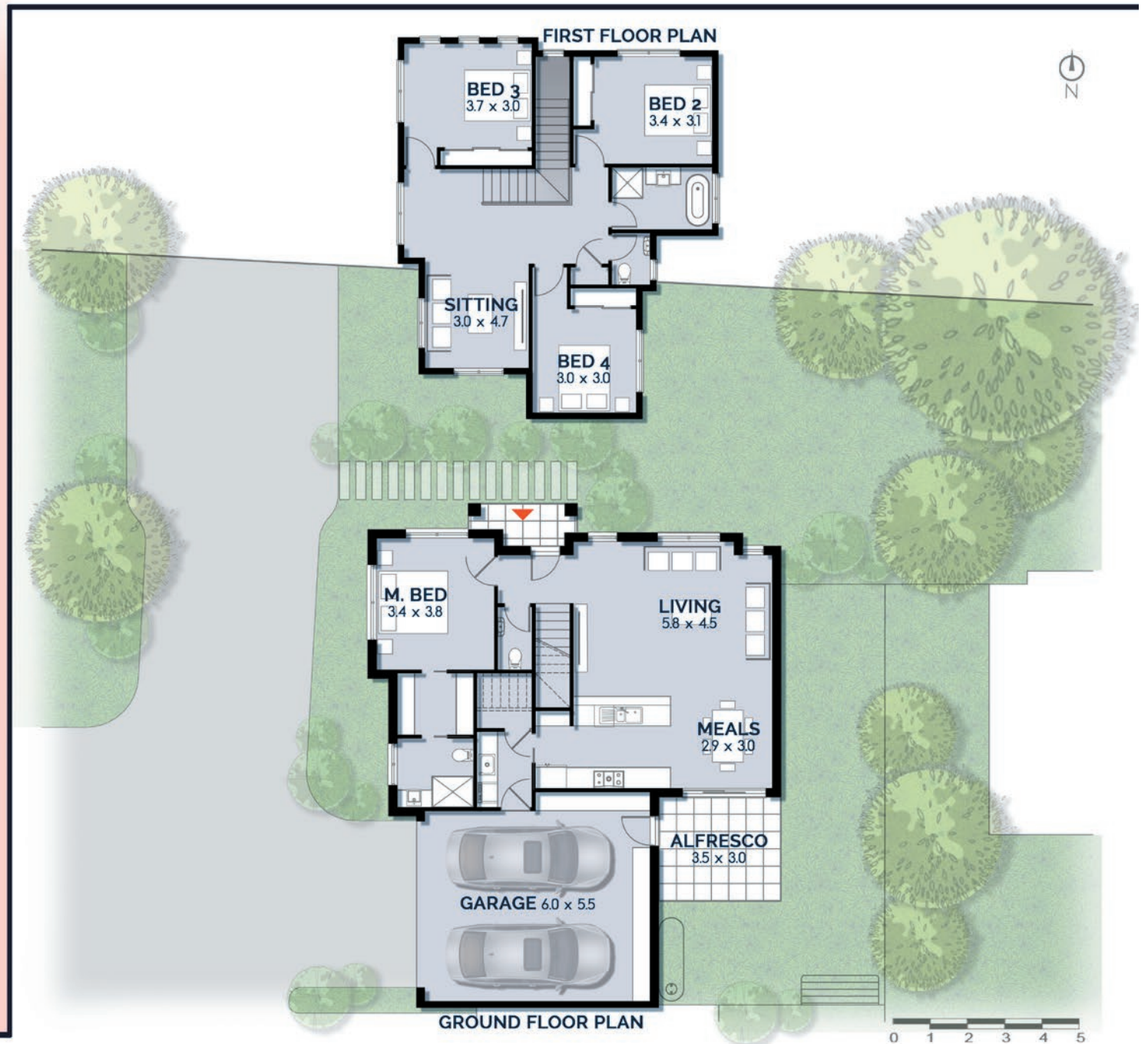
Garage - 41.4 m<sup>2</sup>

Total Area - 215.1 m<sup>2</sup>

Backyard - 57 m<sup>2</sup>



This document has been produced solely for the information for potential purchaser, to assist them in deciding whether they are sufficiently interested in the properties to proceed further. The information contained in this material has been produced in good faith with due care. We do not warrant the accuracy of any information contained herein and do not accept liability for negligence, any error or discrepancy or otherwise in the information. This document may be subject to change without notice.



# OLIVIA

LYNBROOK

## Residence 18

 - 4

 - 2.5

 - 2

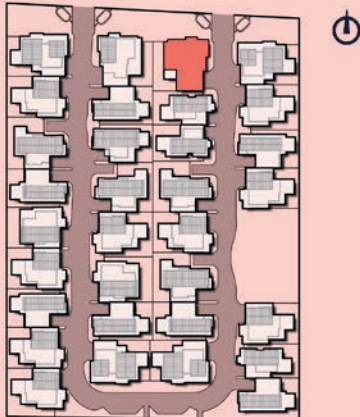
Ground floor - 88.8 m<sup>2</sup>

First floor - 81.7 m<sup>2</sup>

Garage - 41.4 m<sup>2</sup>

Total Area - 215.1 m<sup>2</sup>

Backyard - 61 m<sup>2</sup>



This document has been produced solely for the information for potential purchaser, to assist them in deciding whether they are sufficiently interested in the properties to proceed further. The information contained in this material has been produced in good faith with due care. We do not warrant the accuracy of any information contained herein and do not accept liability for negligence, any error or discrepancy or otherwise in the information. This document may be subject to change without notice.

### FIRST FLOOR PLAN



### GROUND FLOOR PLAN



# OLIVIA

LYNBROOK

## Residence 19



- 2



- 1.5



- 1

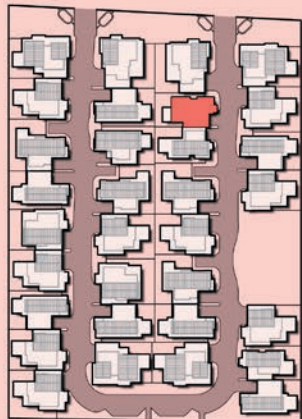
Ground floor - 57.3 m<sup>2</sup>

First floor - 46.7 m<sup>2</sup>

Garage - 24.7 m<sup>2</sup>

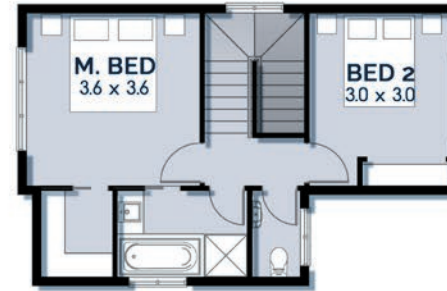
Total Area - 130.5 m<sup>2</sup>

Backyard - 56 m<sup>2</sup>

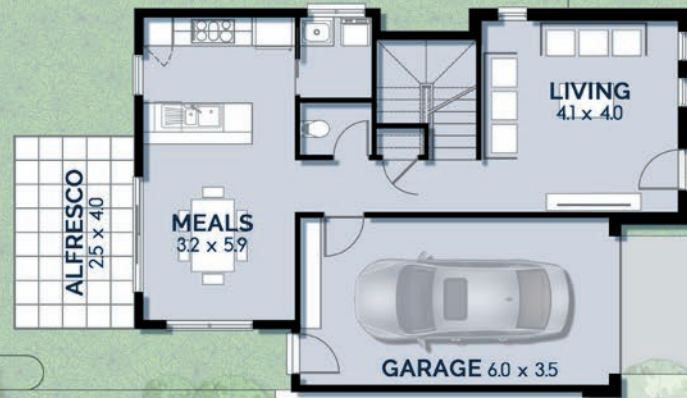


This document has been produced solely for the information for potential purchaser to assist them in deciding whether they are sufficiently interested in the properties to proceed further. The information contained in this material has been produced in good faith with due care. We do not warrant the accuracy of any information contained herein and do not accept liability for negligence, any error or discrepancy or otherwise in the information. This document may be subject to change without notice.

### FIRST FLOOR PLAN



### GROUND FLOOR PLAN



# OLIVIA

LYNBROOK

## Residence 20



- 2



- 1.5



- 1

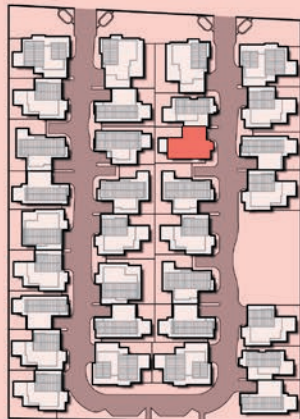
Ground floor - 57.2 m<sup>2</sup>

First floor - 51.0 m<sup>2</sup>

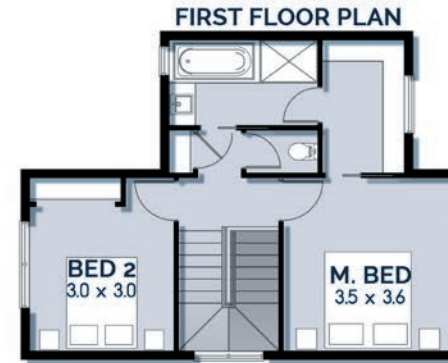
Garage - 25.0 m<sup>2</sup>

Total Area - 135 m<sup>2</sup>

Backyard - 59 m<sup>2</sup>



This document has been produced solely for the information for potential purchaser to assist them in deciding whether they are sufficiently interested in the properties to proceed further. The information contained in this material has been produced in good faith with due care. We do not warrant the accuracy of any information contained herein and do not accept liability for negligence, any error or discrepancy or otherwise in the information. This document may be subject to change without notice.



# OLIVIA

LYNBROOK

## Residence 21



- 2



- 2.5



- 1

Ground floor - 75.0 m<sup>2</sup>

First floor - 72.6 m<sup>2</sup>

Garage - 25.5 m<sup>2</sup>

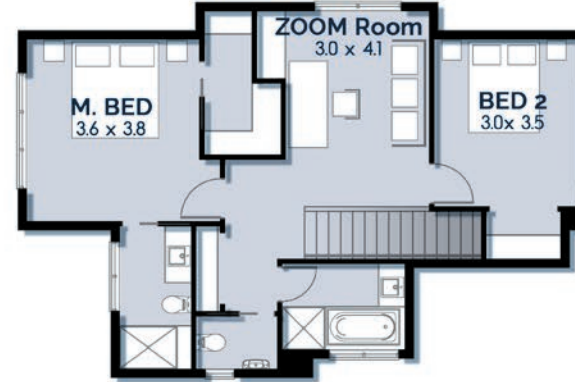
Total Area - 176.4 m<sup>2</sup>

Backyard - 71 m<sup>2</sup>

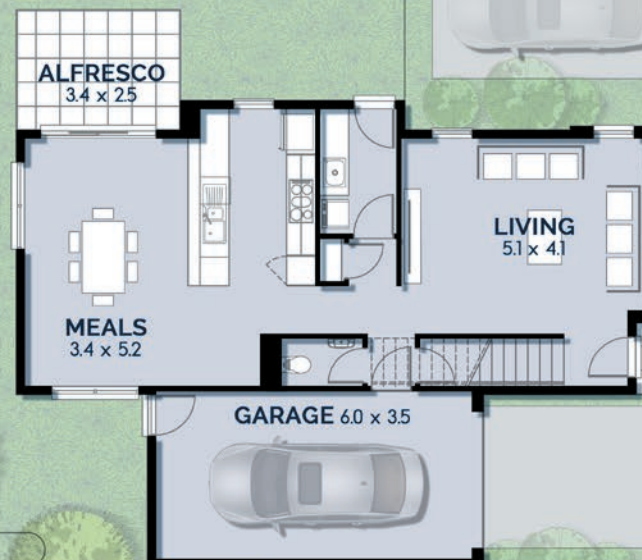


This document has been produced solely for the information for potential purchaser to assist them in deciding whether they are sufficiently interested in the properties to proceed further. The information contained in this material has been produced in good faith with due care. We do not warrant the accuracy of any information contained herein and do not accept liability for negligence, any error or discrepancy or otherwise in the information. This document may be subject to change without notice.

### FIRST FLOOR PLAN



### GROUND FLOOR PLAN



0 1 2 3 4 5



# OLIVIA

LYNBROOK

## Residence 22



- 3



- 2.5



- 2

Ground floor - 67.6 m<sup>2</sup>

First floor - 69.5 m<sup>2</sup>

Garage - 39.2 m<sup>2</sup>

Total Area - 179.4 m<sup>2</sup>

Backyard - 58 m<sup>2</sup>

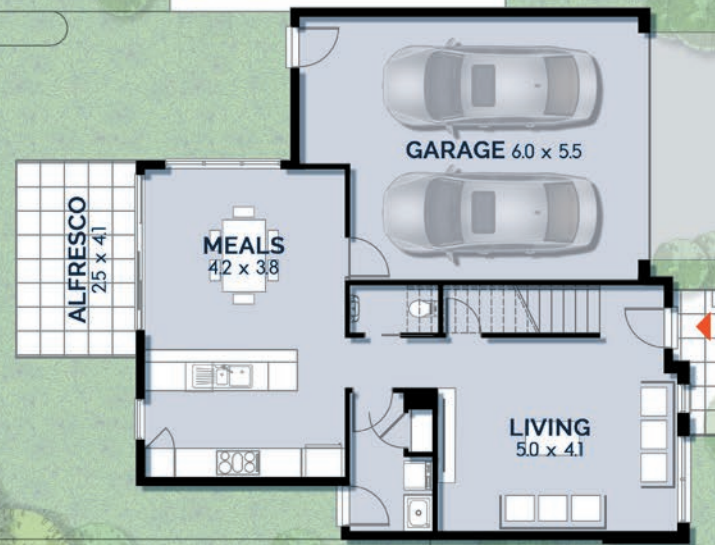


This document has been produced solely for the information for potential purchaser to assist them in deciding whether they are sufficiently interested in the properties to proceed further. The information contained in this material has been produced in good faith with due care. We do not warrant the accuracy of any information contained herein and do not accept liability for negligence, any error or discrepancy or otherwise in the information. This document may be subject to change without notice.

### FIRST FLOOR PLAN



### GROUND FLOOR PLAN



# OLIVIA

LYNBROOK

## Residence 23



- 3



- 2.5



- 1

Ground floor - 75.0 m<sup>2</sup>

First floor - 72.6 m<sup>2</sup>

Garage - 25.5 m<sup>2</sup>

Total Area - 176.4 m<sup>2</sup>

Backyard - 69 m<sup>2</sup>

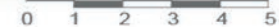


This document has been produced solely for the information for potential purchaser to assist them in deciding whether they are sufficiently interested in the properties to proceed further. The information contained in this material has been produced in good faith with due care. We do not warrant the accuracy of any information contained herein and do not accept liability for negligence, any error or discrepancy or otherwise in the information. This document may be subject to change without notice.

### FIRST FLOOR PLAN



### GROUND FLOOR PLAN



# OLIVIA

LYNBROOK

## Residence 24

 - 3

 - 2.5

 - 1

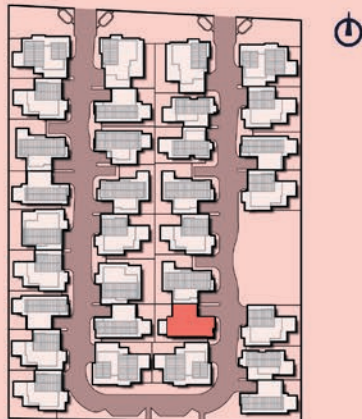
Ground floor - 68.2 m<sup>2</sup>

First floor - 69 m<sup>2</sup>

Garage - 25.6 m<sup>2</sup>

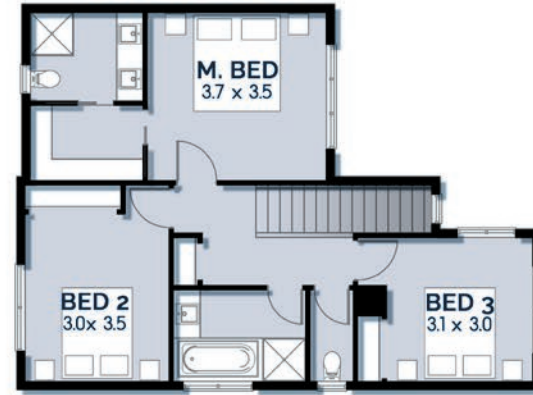
Total Area - 164.5 m<sup>2</sup>

Backyard - 54 m<sup>2</sup>



This document has been produced solely for the information for potential purchaser to assist them in deciding whether they are sufficiently interested in the properties to proceed further. The information contained in this material has been produced in good faith with due care. We do not warrant the accuracy of any information contained herein and do not accept liability for negligence, any error or discrepancy or otherwise in the information. This document may be subject to change without notice.

### FIRST FLOOR PLAN



### GROUND FLOOR PLAN



0 1 2 3 4 5

# OLIVIA

LYNBROOK

## Residence 25



- 4



- 3.5



- 2

Ground floor - 89.9 m<sup>2</sup>

First floor - 76.2 m<sup>2</sup>

Garage - 38 m<sup>2</sup>

Total Area - 207.6 m<sup>2</sup>

Backyard - 47 m<sup>2</sup>

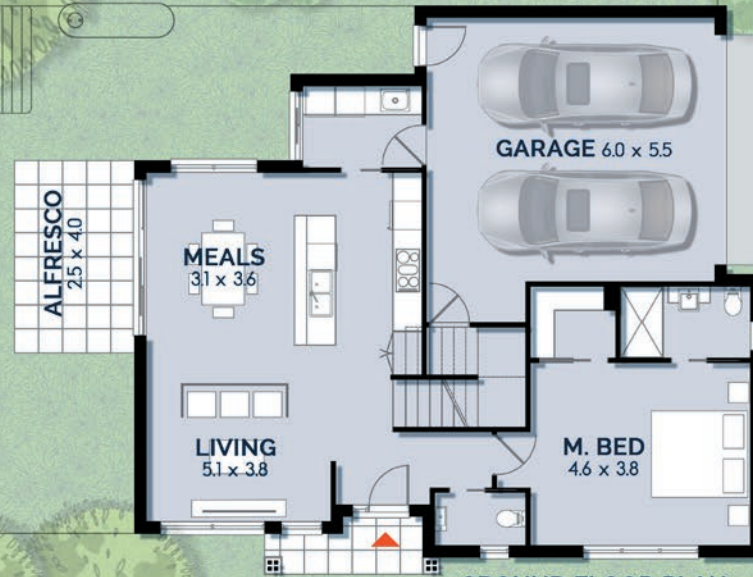


This document has been produced solely for the information for potential purchaser to assist them in deciding whether they are sufficiently interested in the properties to proceed further. The information contained in this material has been produced in good faith with due care. We do not warrant the accuracy of any information contained herein and do not accept liability for negligence, any error or discrepancy or otherwise in the information. This document may be subject to change without notice.

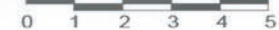
### FIRST FLOOR PLAN



### GARAGE 6.0 x 5.5



### GROUND FLOOR PLAN



# OLIVIA

LYNBROOK

## Residence 26

 - 3

 - 2.5

 - 1

Ground floor - 68.2 m<sup>2</sup>

First floor - 72.6 m<sup>2</sup>

Garage - 26 m<sup>2</sup>

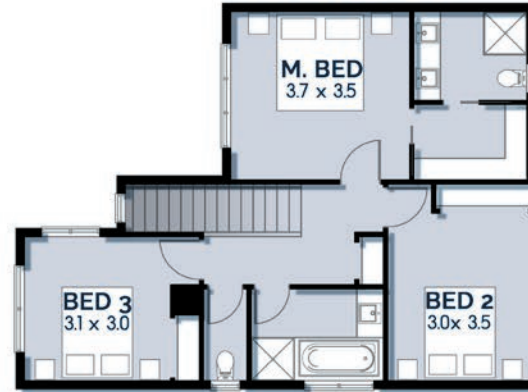
Total Area - 168.5 m<sup>2</sup>

Backyard - 71 m<sup>2</sup>

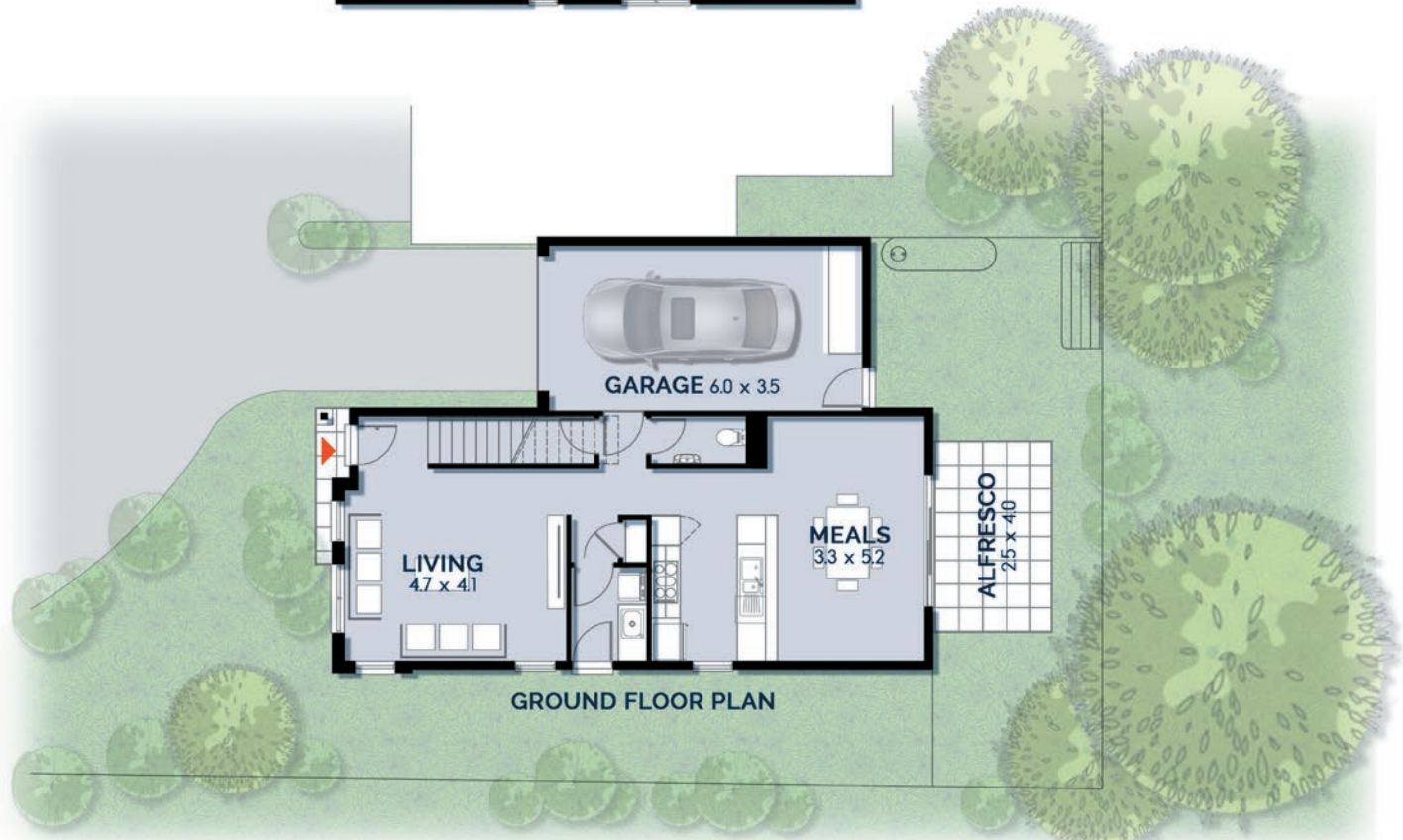


This document has been produced solely for the information for potential purchaser to assist them in deciding whether they are sufficiently interested in the properties to proceed further. The information contained in this material has been produced in good faith with due care. We do not warrant the accuracy of any information contained herein and do not accept liability for negligence, any error or discrepancy or otherwise in the information. This document may be subject to change without notice.

### FIRST FLOOR PLAN



### GROUND FLOOR PLAN



0 1 2 3 4 5

# OLIVIA

LYNBROOK

## Residence 27

 - 2

 - 1.5

 - 1

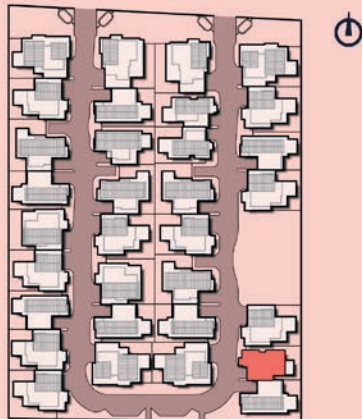
Ground floor - 57.3 m<sup>2</sup>

First floor - 46.7 m<sup>2</sup>

Garage - 24.7 m<sup>2</sup>

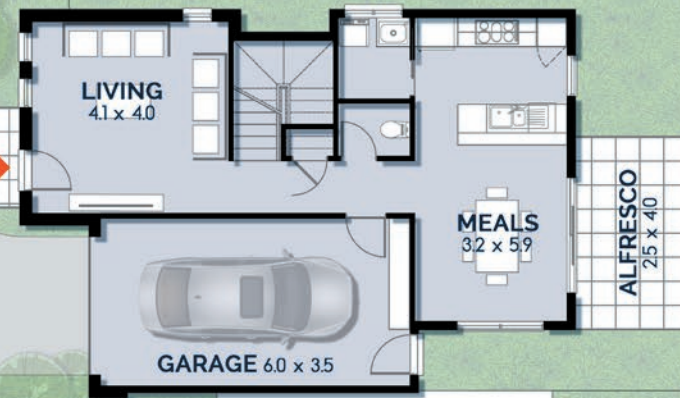
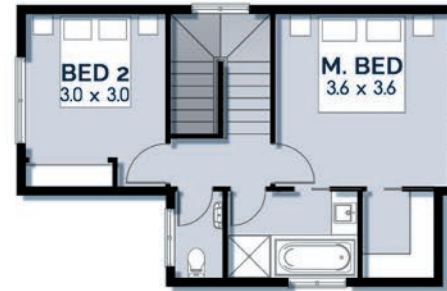
Total Area - 130.5 m<sup>2</sup>

Backyard - 58 m<sup>2</sup>

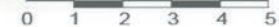


This document has been produced solely for the information for potential purchaser to assist them in deciding whether they are sufficiently interested in the properties to proceed further. The information contained in this material has been produced in good faith with due care. We do not warrant the accuracy of any information contained herein and do not accept liability for negligence, any error or discrepancy or otherwise in the information. This document may be subject to change without notice.

### FIRST FLOOR PLAN



### GROUND FLOOR PLAN



# OLIVIA

LYNBROOK

## Residence 28



- 3



- 2.5



- 2

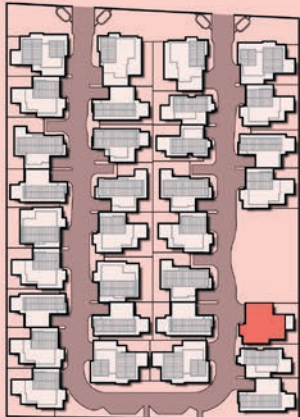
Ground floor - 67.7 m<sup>2</sup>

First floor - 69.5 m<sup>2</sup>

Garage - 39.2 m<sup>2</sup>

Total Area - 179.4 m<sup>2</sup>

Backyard - 57 m<sup>2</sup>

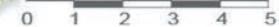
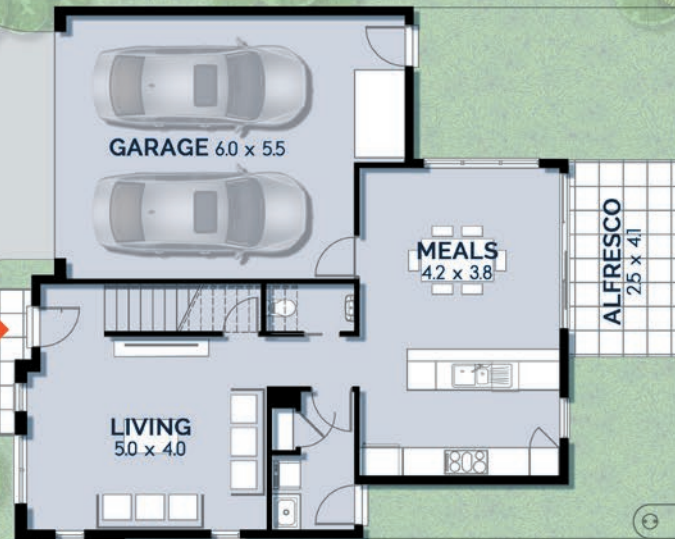


This document has been produced solely for the information for potential purchaser, to assist them in deciding whether they are sufficiently interested in the properties to proceed further. The information contained in this material has been produced in good faith with due care. We do not warrant the accuracy of any information contained herein and do not accept liability for negligence, any error or discrepancy or otherwise in the information. This document may be subject to change without notice.

### FIRST FLOOR PLAN



### GROUND FLOOR PLAN



# OLIVIA

LYNBROOK

## Residence 29



- 3



- 2.5



- 2

Ground floor - 67.7 m<sup>2</sup>

First floor - 69.5 m<sup>2</sup>

Garage - 39.2 m<sup>2</sup>

Total Area - 179.4 m<sup>2</sup>

Backyard - 55 m<sup>2</sup>

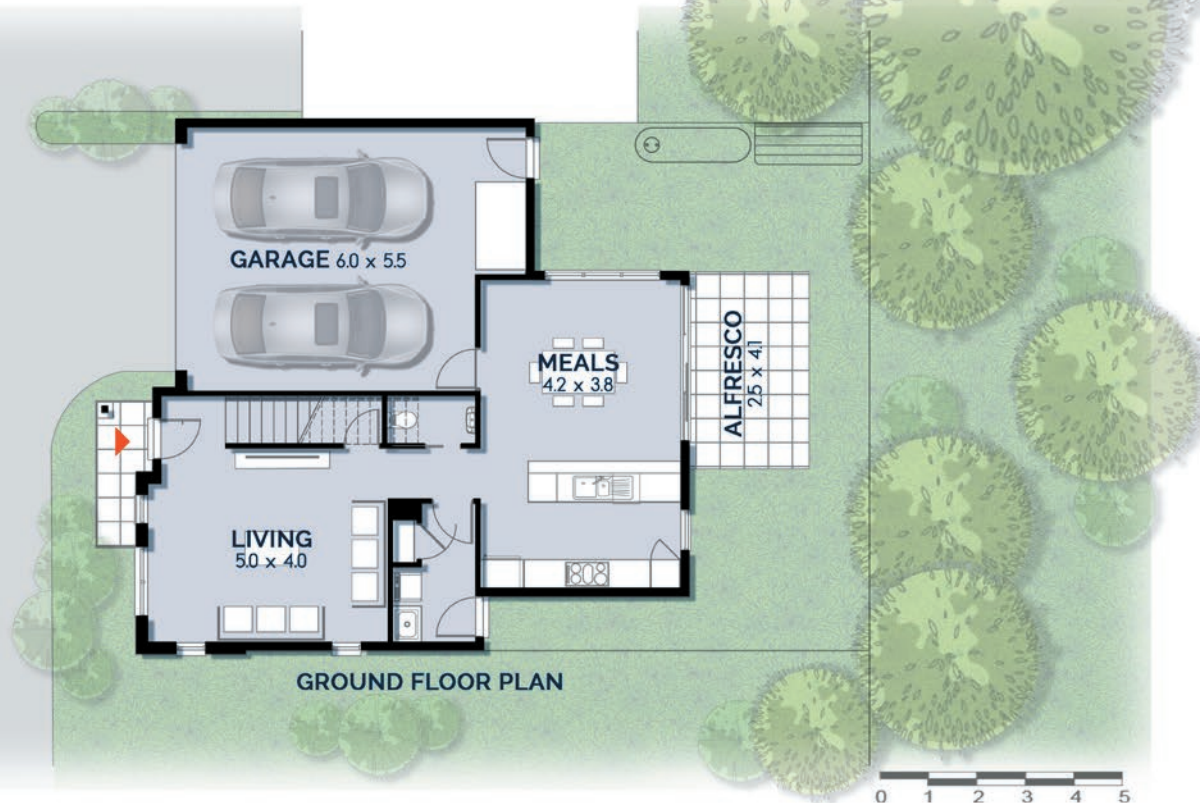


This document has been produced solely for the information for potential purchaser, to assist them in deciding whether they are sufficiently interested in the properties to proceed further. The information contained in this material has been produced in good faith with due care. We do not warrant the accuracy of any information contained herein and do not accept liability for negligence, any error or discrepancy or otherwise in the information. This document may be subject to change without notice.

### FIRST FLOOR PLAN



### GROUND FLOOR PLAN





# OLIVIA

LYNBROOK

## Residence 30



- 3



- 2.5



- 1

Ground floor - 68.2 m<sup>2</sup>

First floor - 69 m<sup>2</sup>

Garage - 25.6 m<sup>2</sup>

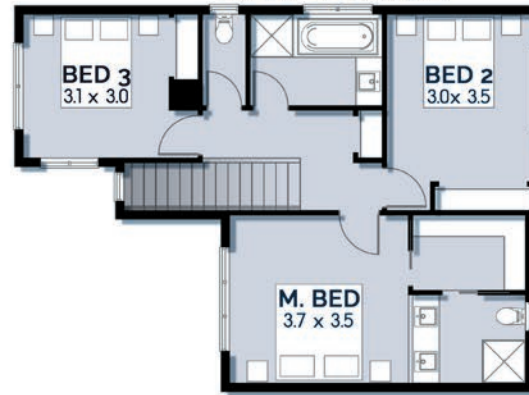
Total Area - 164.5 m<sup>2</sup>

Backyard - 52 m<sup>2</sup>

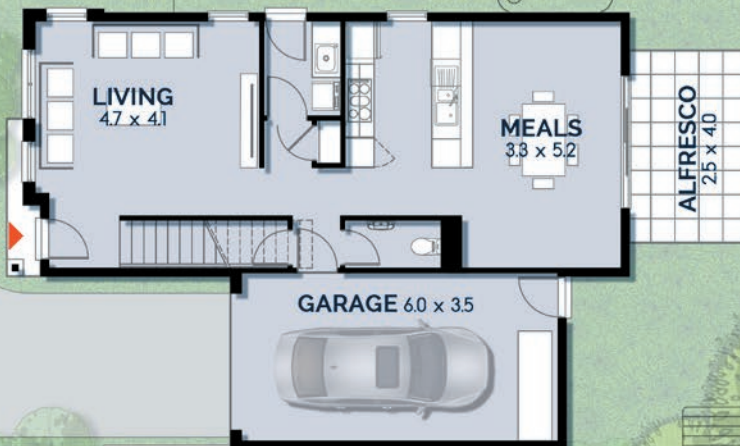


This document has been produced solely for the information for potential purchaser, to assist them in deciding whether they are sufficiently interested in the properties to proceed further. The information contained in this material has been produced in good faith with due care. We do not warrant the accuracy of any information contained herein and do not accept liability for negligence, any error or discrepancy or otherwise in the information. This document may be subject to change without notice.

### FIRST FLOOR PLAN



### GROUND FLOOR PLAN



# OLIVIA

LYNBROOK

## Residence 31



- 3



- 2.5



- 2

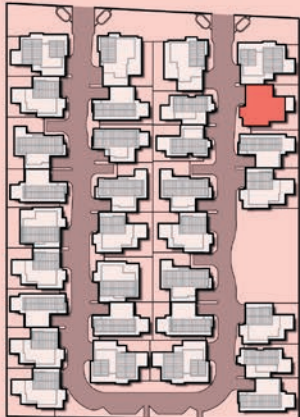
Ground floor - 67.7 m<sup>2</sup>

First floor - 69.5 m<sup>2</sup>

Garage - 39.2 m<sup>2</sup>

Total Area - 179.4 m<sup>2</sup>

Backyard - 71 m<sup>2</sup>



This document has been produced solely for the information for potential purchaser, to assist them in deciding whether they are sufficiently interested in the properties to proceed further. The information contained in this material has been produced in good faith with due care. We do not warrant the accuracy of any information contained herein and do not accept liability for negligence, any error or discrepancy or otherwise in the information. This document may be subject to change without notice.

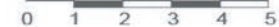
### FIRST FLOOR PLAN



### GARAGE 60 x 55



### GROUND FLOOR PLAN



# OLIVIA

LYNBROOK

## Residence 32

 - 4

 - 3.5

 - 2

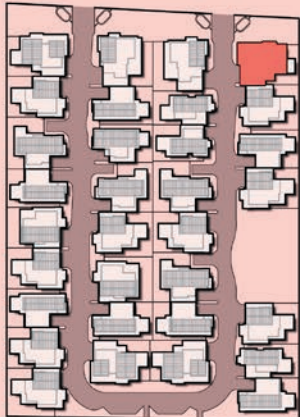
Ground floor - 89.9 m<sup>2</sup>

First floor - 76.2 m<sup>2</sup>

Garage - 38 m<sup>2</sup>

Total Area - 207.6 m<sup>2</sup>

Backyard - 51 m<sup>2</sup>



This document has been produced solely for the information for potential purchaser, to assist them in deciding whether they are sufficiently interested in the properties to proceed further. The information contained in this material has been produced in good faith with due care. We do not warrant the accuracy of any information contained herein and do not accept liability for negligence, any error or discrepancy or otherwise in the information. This document may be subject to change without notice.

### FIRST FLOOR PLAN



### GROUND FLOOR PLAN



Another quality project delivered by:

**PIERMONT**  

---

**GROUP**